



UConn and UConn Health Fiscal Year 2025 First Quarter Financial Review

UConn: FY25 Q1 Actual vs Budget

	FY25 Q1 Actuals	FY25 Q1 Budget	Variance	% variance
State Appropriations	\$61.2	\$61.2	\$0.0	0.0%
Tuition	284.3	279.6	4.8	1.7%
Course/Mandatory Fees	69.0	64.2	4.8	7.4%
Grants & Contracts - Financial Aid	40.4	40.0	0.4	1.1%
Grants & Contracts - Other	54.1	51.4	2.7	5.2%
Auxiliary Revenue	98.5	97.0	1.5	1.6%
Other Revenues ⁽¹⁾	9.3	10.0	(0.7)	-6.7%
Total Revenues	\$616.8	\$603.4	\$13.5	2.2%
Salary/Benefits	\$149.5	\$145.0	\$4.5	3.1%
Financial Aid - Tuition Funded	99.9	99.2	0.6	0.6%
Financial Aid - Other	56.5	54.1	2.4	4.4%
Capital Projects/Lease and Debt Payments	4.1	5.0	(0.9)	-18.2%
Other Expenses ⁽²⁾	78.5	78.2	0.3	0.4%
Total Expense	\$388.5	\$381.5	\$6.9	1.8%
Use of Fund Balance/FIP				
Net Income/(Loss)	\$228.4	\$221.8	\$6.6	3.0%

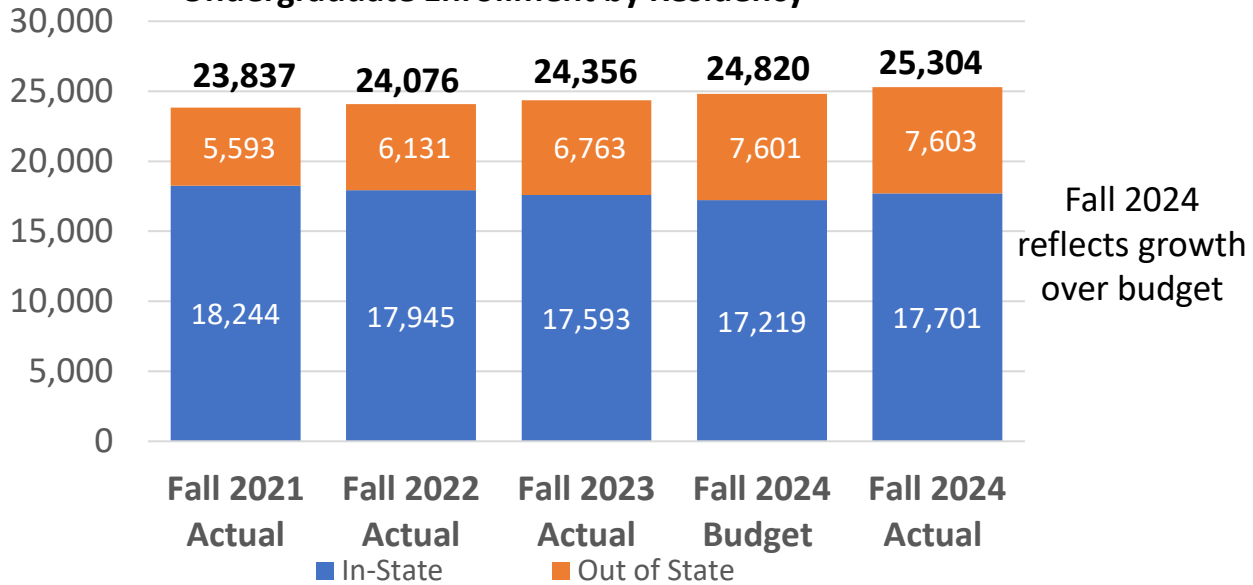
(1) Other Revenue includes Foundation, investments, gifts and self-supporting revenue

(2) Other Expense includes food service, supplies, facilities contracts, travel and other operating expenses

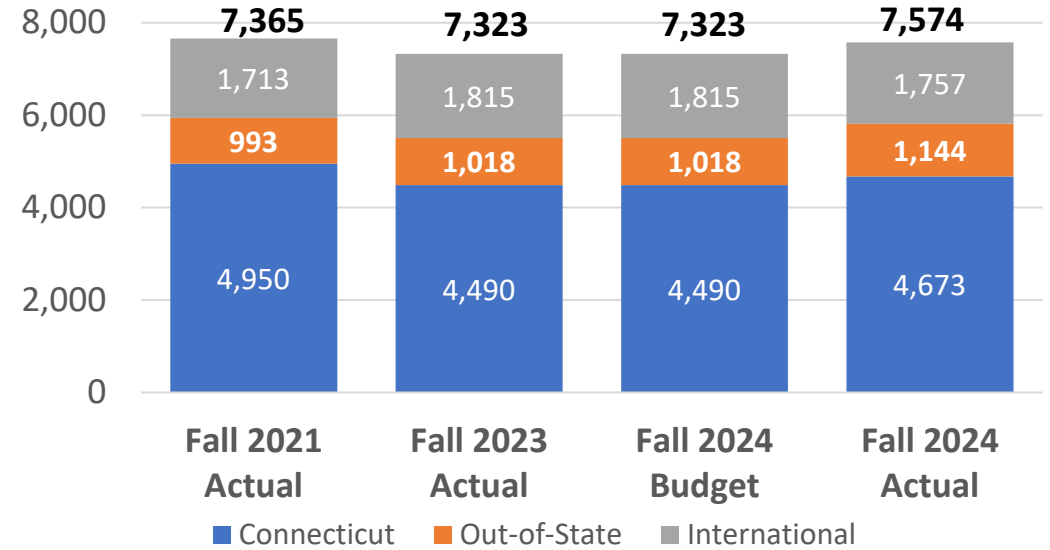


UConn: FY25 Data points

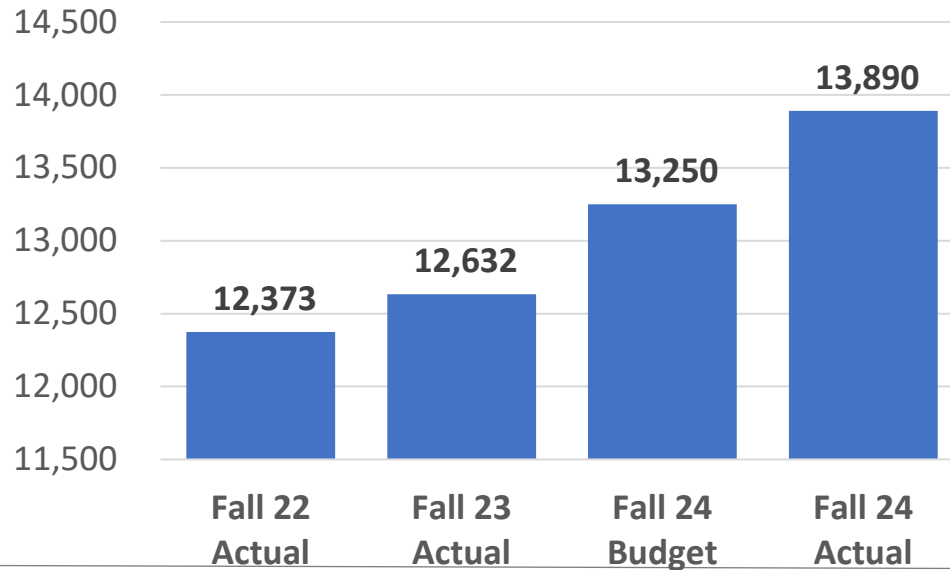
Undergraduate Enrollment by Residency



Graduate Enrollment by Residency



Fall Housing Occupancy



Graduate enrollment is running favorably over budget, which is assumed to be flat enrollment. Growth includes professional programs, such as Social Work



UConn Health: FY25 Q1 Actual vs Budget

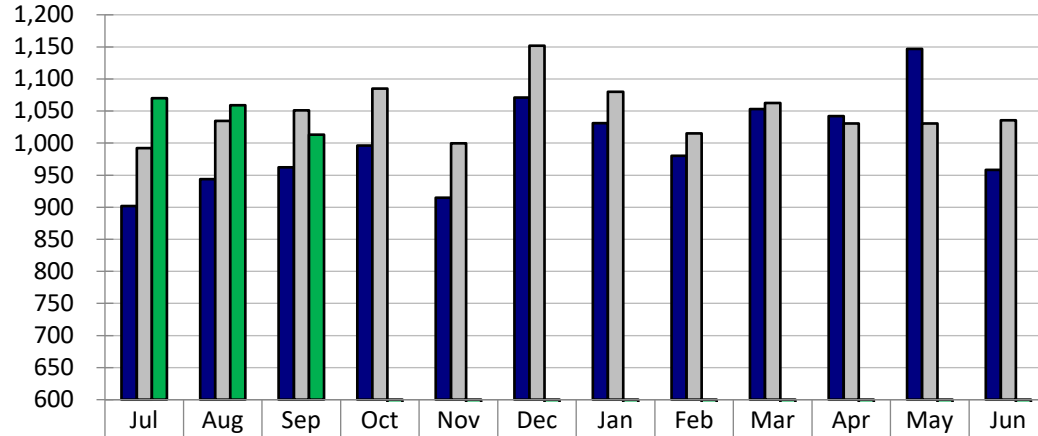
	FY25 Q1 Actuals	FY25 Q1 Budget	Variance	Percent Variance
State Appropriation	\$42.5	\$42.6	\$0.0	-0.1%
Tuition and Fees	8.6	8.6	0.0	0.0%
Grants & Contracts	27.1	28.9	-1.8	-6.2%
Interns/Residents	23.3	23.0	0.3	1.3%
Net Patient Revenue	258.2	247.9	10.3	4.2%
Other Revenue ⁽¹⁾	55.1	51.2	4.0	7.7%
Total Revenues	\$414.9	\$402.2	\$12.7	3.2%
Salary/Benefits	\$204.4	\$200.6	\$3.8	1.9%
Drugs/Medical Supplies	83.0	80.0	3.0	3.7%
Resident and Fellow house staff	19.3	19.1	0.3	1.4%
Other Expenses ⁽²⁾	104.6	100.6	4.0	4.0%
Capital Projects/Lease and Debt Payments	7.4	7.7	-0.3	-4.1%
Total Expense	\$418.8	\$408.0	\$10.8	2.6%
Net Income/(Loss)	-\$3.9	-\$5.8	\$1.9	

(1) Other Revenue includes auxiliary services, gifts/endowments, external contract revenue, investment income and internal income (offset by internal expense)

(2) Other expenses includes utilities, insurance, medical contractual support, outside and other purchased services, repairs/maintenance and internal expenses (offset by internal income)

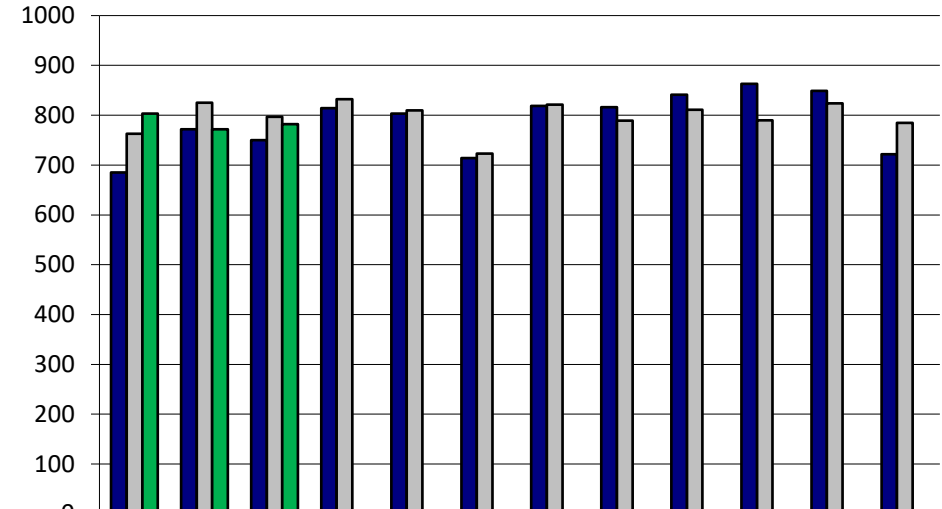
UConn Health: FY25 Data points

JDH Discharges



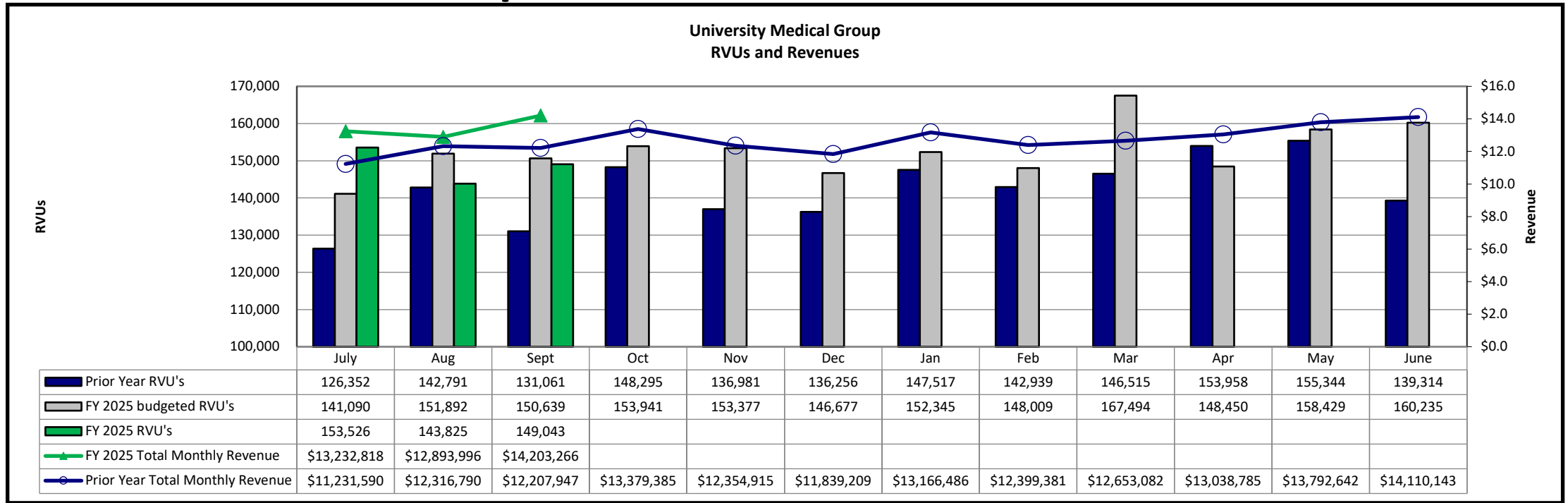
	Jul	Aug	Sep	Oct	Nov	Dec	Jan	Feb	Mar	Apr	May	Jun
■ Prior Year	902	944	962	996	915	1,071	1,031	980	1,053	1,042	1,147	958
■ Budget FY25	992	1,034	1,051	1,085	1,000	1,152	1,080	1,015	1,062	1,031	1,030	1,036
■ Actual FY25	1,070	1,059	1,013	-	-	-	-	-	-	-	-	-

JDH Surgical (Inpatient and UHSC)



	Jul	Aug	Sep	Oct	Nov	Dec	Jan	Feb	Mar	Apr	May	Jun
■ Prior Year	685	772	750	814	803	714	819	816	841	863	849	722
■ Budget FY25	763	825	797	832	810	723	821	789	811	790	824	785
■ Actual FY25	803	772	782	0	0	0	0	0	0	0	0	0

UConn Health: FY25 Data points



School of Medicine - Student Count

	FY2024 Actual	FY2025 Budget	FY2025 Forecast	Variance
Tuition In State	393	393	421	28
Tuition Out of State	37	33	34	1
Tuition Regional	7	9	5	(4)
	437	435	460	25

School of Dental Medicine - Student Count

	FY2024 Actual	FY2025 Budget	FY2025 Forecast	Variance
Tuition In State	184	182	185	3
Tuition Out of State	10	12	8	(4)
Tuition Regional	10	10	12	2
	204	204	205	1